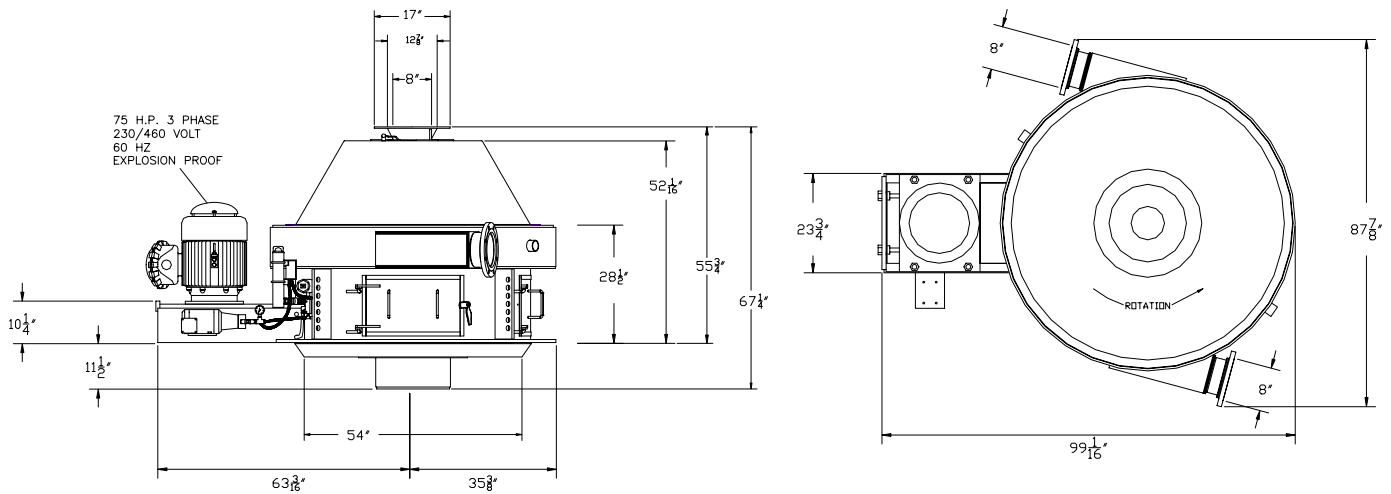


WSM-04 CONTINUOUS CENTRIFUGE



Technical Specifications:

SCREENS

Screen Area: 13.3 sqft

Screen Type: Profile wire
(opening depends on
requirement) 0.020"
is standard, unless specified

Requires Approx. 8 gals.

E.P. Gear Oil ISO 68

(Shipped With)

Pennzoil—Maxol EP 68

Shell —Omala 68

Texaco —Meropa 68

Mobil —Mobil Gear 626

Exxon —Spartan EP68

Amoco —Perma Gear EP68

Chevron —Ultra Gear 68

Oil Pump Motor Specifications:

Weight:
27 lbs.

Horsepower:
1/2

Classification:
Explosion proof
Class 1
Division 1

Voltage/Frequency:
Variable

Main Drive Motor Specifications:

Weight:
1,100 lbs.

Horsepower:
75

Classification:
Explosion proof
Class 1
Division 1

Voltage/Frequency:
Variable



Drilling Fluid Equipment Pacific

<http://www.dfepacific.com>